

Forming equipment

Introduction

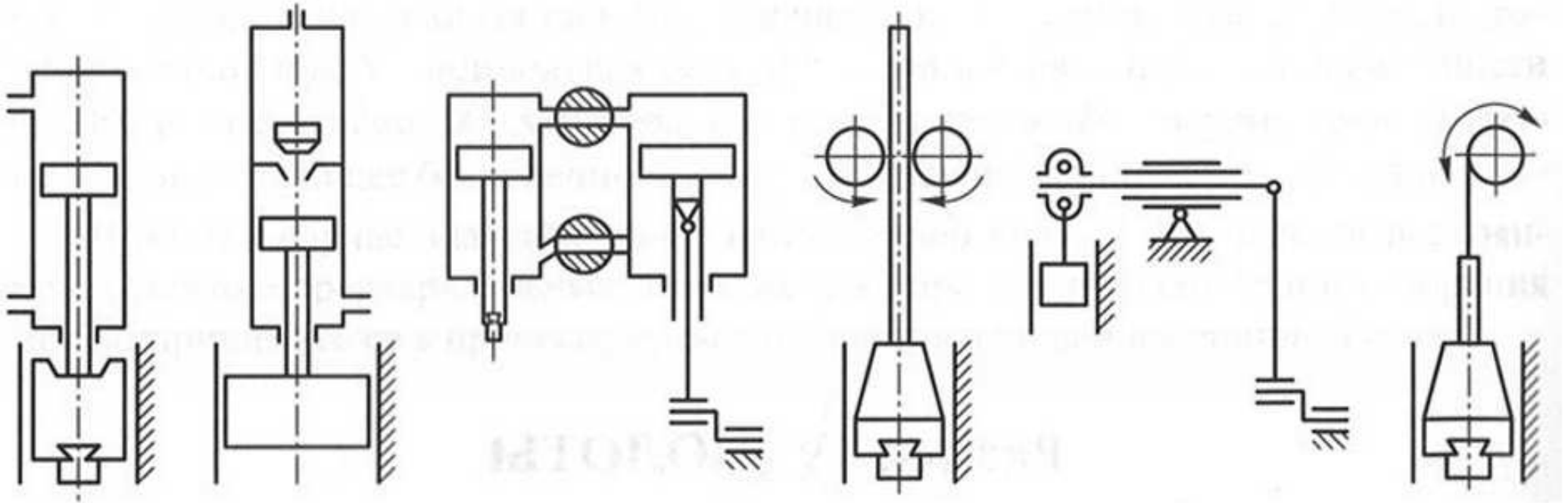
Forming machine characteristics

- **Energy** restricted machines
(hammers, screw presses)
- **Stroke (displacement)** restricted machines
(mechanical presses)
- **Force** restricted machines
(hydraulic / pneumatic presses)

Hammers

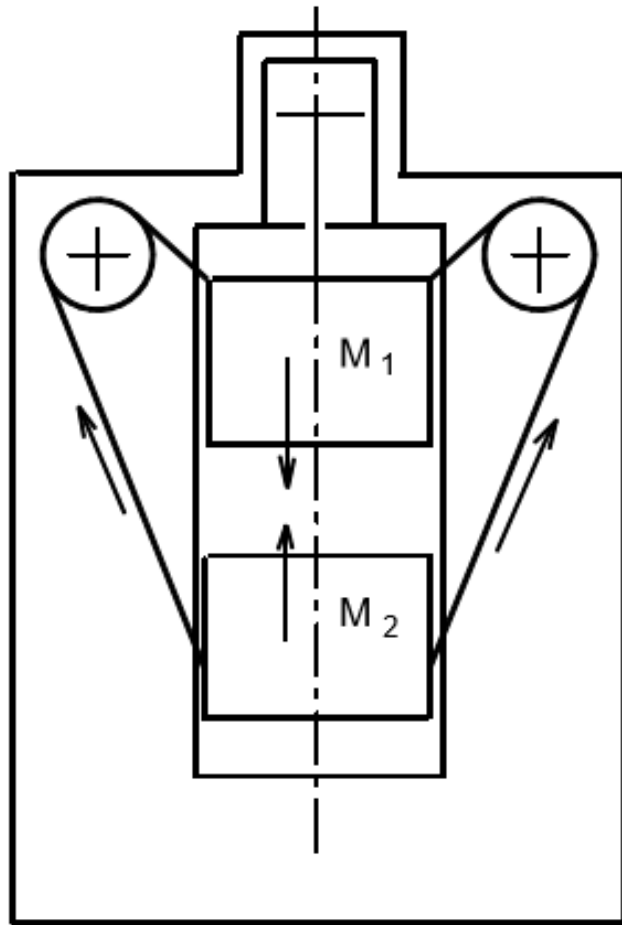
Hammer motion types

The total energy is to be used !

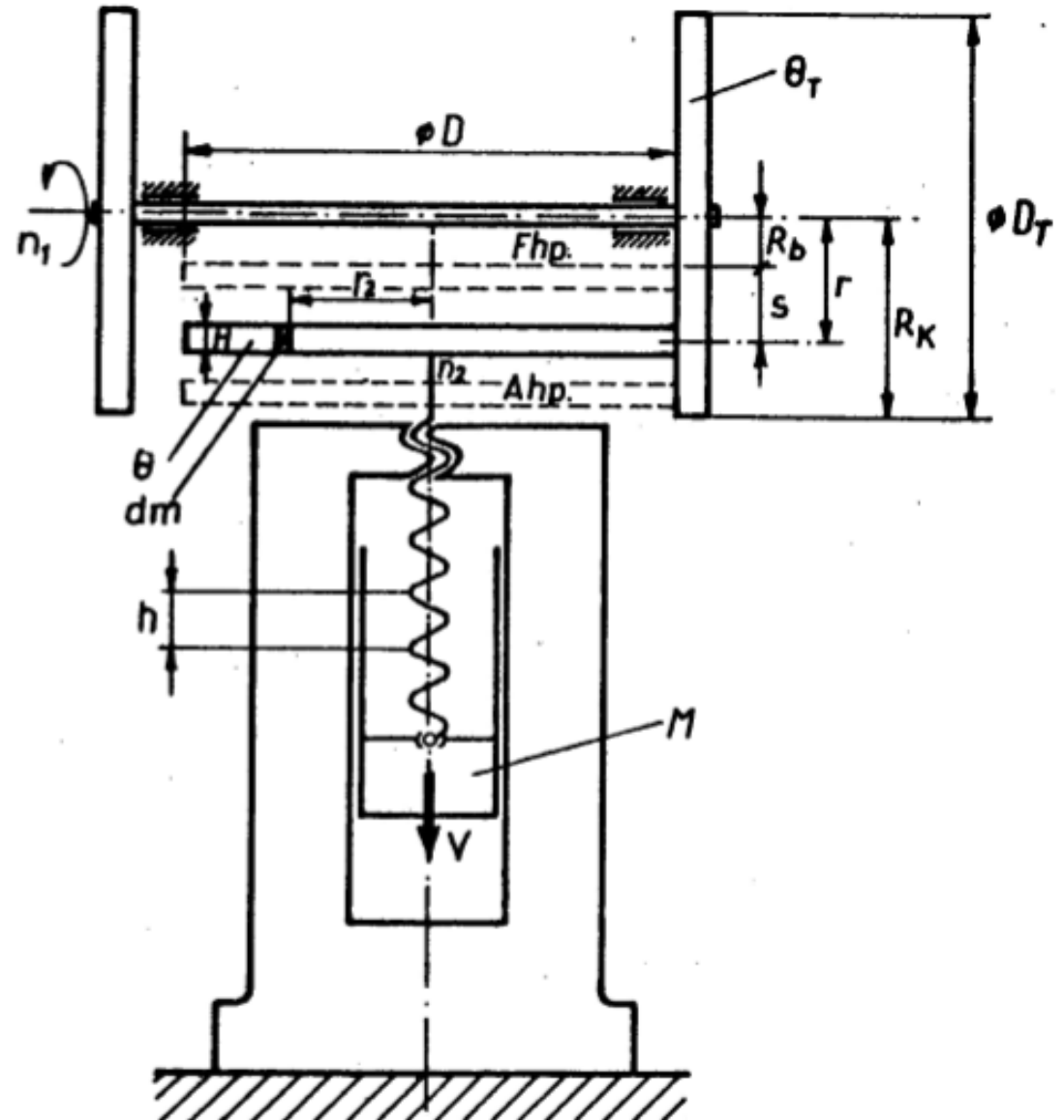


Hammer, screw press

Counter blow hammer



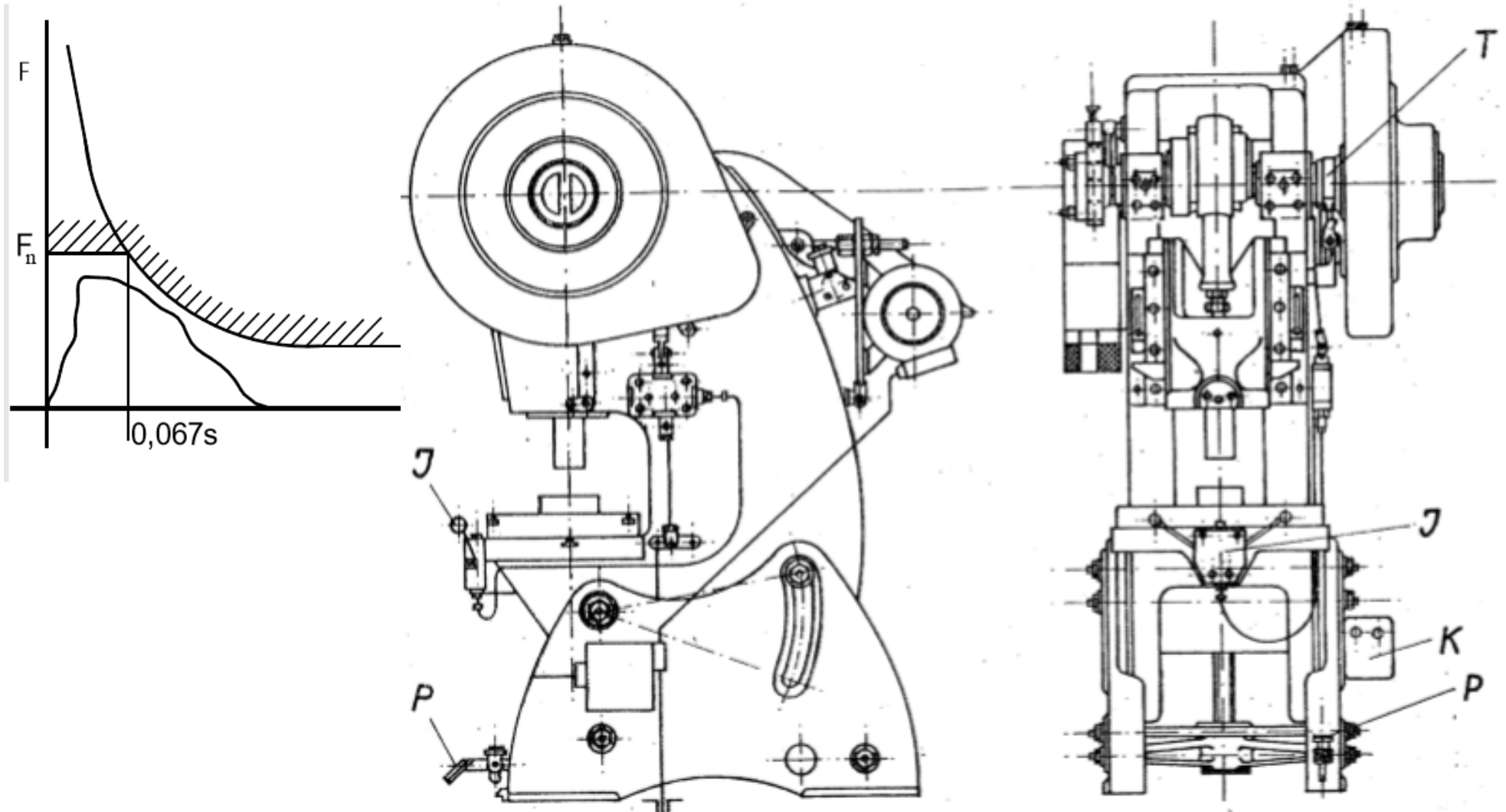
Screw press



Mechanical press

Stroke (displacement) characteristics

The ram has to move along the whole stroke!

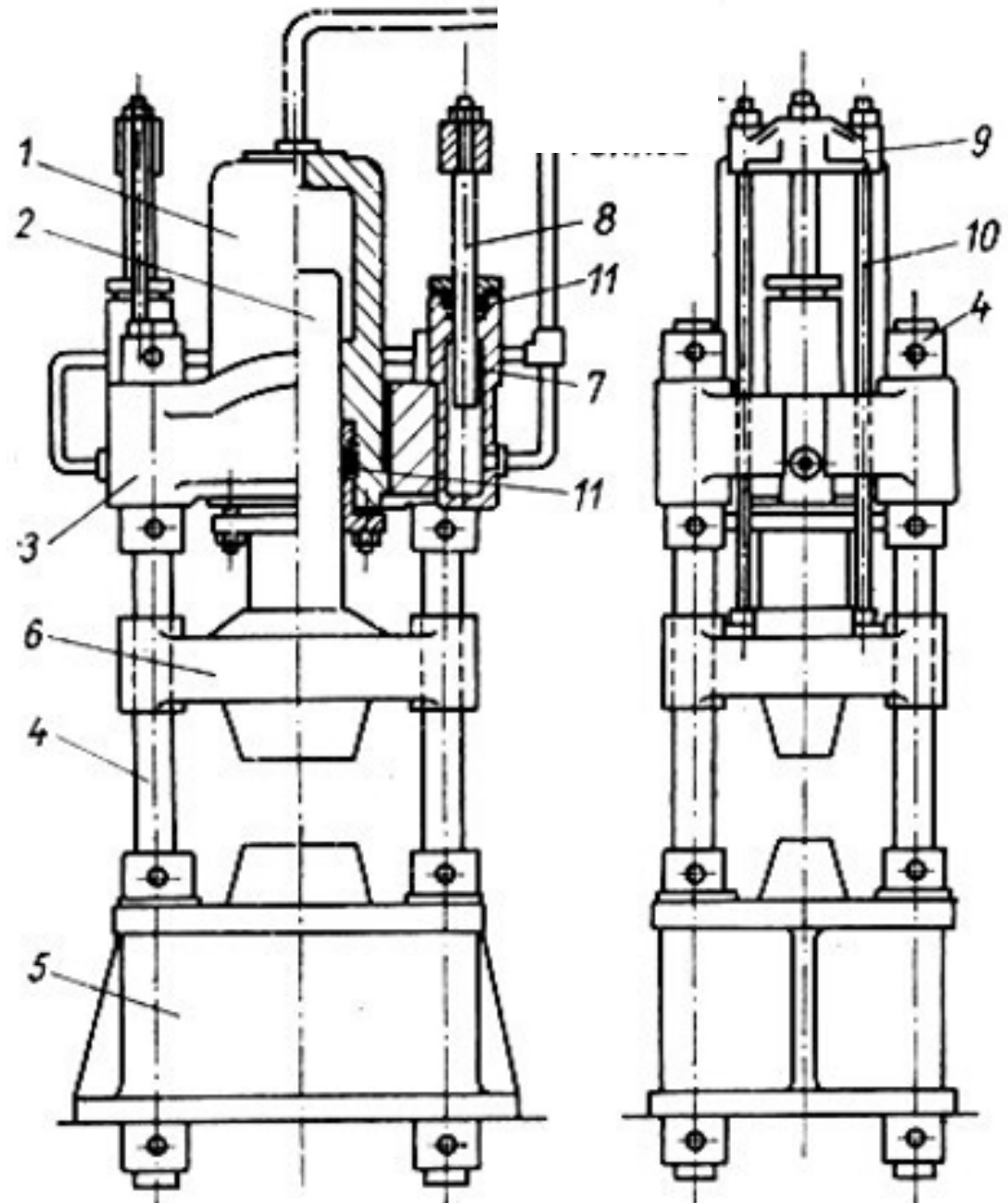


Hydraulic press

**The force is restricted
by the fluid pressure**

The machine stops at
the maximum pressure
(by the safety valve).

The force is proportional
with the fluid pressure.



Thank you for your attention!